

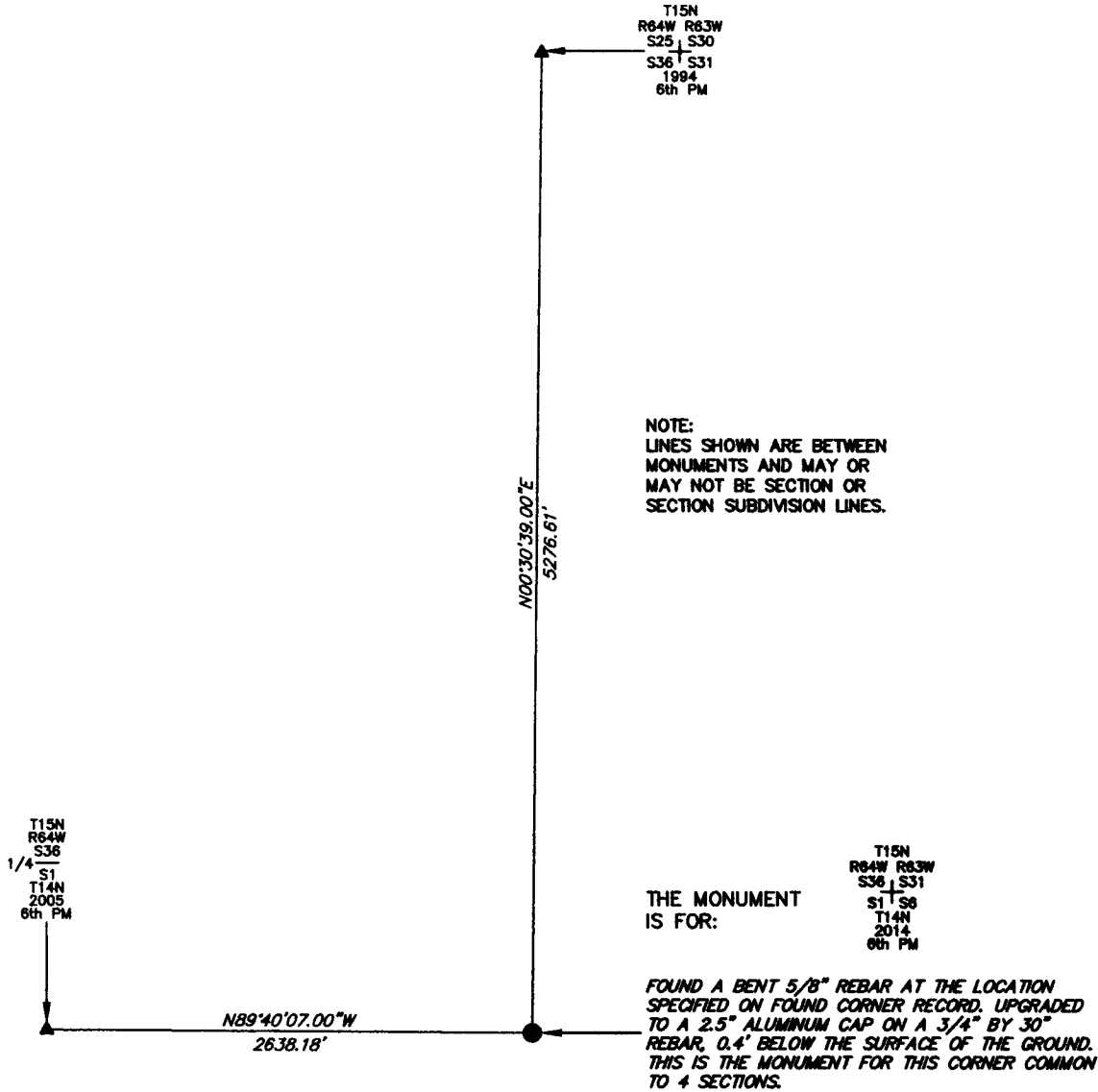
State of Wyoming Corner Record

CORNER PERPETUATION AND FILING ACT,

Regulations of the Board of Registration for Professional Engineers and Land Surveyors.)

Reverse side of this form may be used if more space is needed.

Record of original survey and citation of source of historic information (if corner is lost or obliterated). Description of corner monumentation evidence found and/or monument and accessories established to perpetuate the location of this corner. Sketch of relative location of monument, accessories, and reference points with course and distance to adjacent corner(s) (if determined in this survey). Method and rationale for reestablishment of lost or obliterated corner.



NOTE:
LINES SHOWN ARE BETWEEN
MONUMENTS AND MAY OR
MAY NOT BE SECTION OR
SECTION SUBDIVISION LINES.

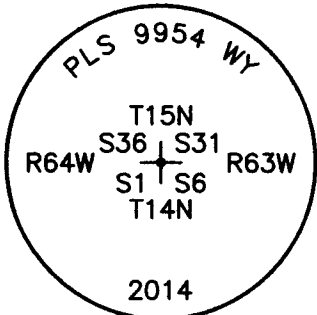
THE MONUMENT
IS FOR:

T15N
R64W R63W
S36 | S31
S1 | S6
T14N
2014
6th PM

FOUND A BENT 5/8" REBAR AT THE LOCATION
SPECIFIED ON FOUND CORNER RECORD. UPGRADED
TO A 2.5" ALUMINUM CAP ON A 3/4" BY 30"
REBAR, 0.4' BELOW THE SURFACE OF THE GROUND.
THIS IS THE MONUMENT FOR THIS CORNER COMMON
TO 4 SECTIONS.



SCALE 1"=1000'
(EXCEPT IN
TRIVIAL CASES)
BEARINGS ARE RELATED
TO WGS 84 WITH
GPS OBSERVATIONS
DRAWN BY: SM
P.C. B. LOWREY
COUNTY: LARAMIE



CORNER MONUMENT SYMBOLS

- RECORD IS FOR THIS CORNER MONUMENT.
- ▲ A RELATED CORNER OR WC MONUMENT.

THE MONUMENT IS MARKED

Date of Field Work: 10/08/2014 Office Reference: _____

CROSS INDEX DIAGRAM

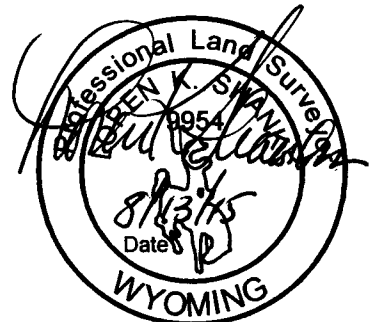
A	1	2	3	4	5	6	7	8	9	10	11	12	13	14	15	16	17	18	19	20	21	22	23	24	25	A
B																										B
C		6			5				4					3					2							C
D																										D
E																										E
F																										F
G			7			8				9				10					11							G
H																										H
J																										J
K																										K
L				18			17				16				15					14						L
M																										M
N																										N
O																										O
P					19			20				21				22					23					P
Q																										Q
R																										R
S																										S
T						30			29				28				27				26					T
U																										U
V																										V
W																										W
X																										X
Y																										Y
Z																										Z

Firm/Agency, Address

UELS, LLC
85 South 200 East
Vernal, Utah 84078
435-789-1017

This corner record was prepared by me or under my direction and supervision.

SEAL & SIGNATURE



REC'D #: 670105
RECORDED 9/22/2015 AT 10:42 AM BK# 2465 PG# 113
Debra K. Lathrop, CLERK OF LARAMIE COUNTY, WY PAGE 1 OF 1